



Let the migration experts take you to Office 365 or SharePoint faster and with less risk.



## Migration As A Service (MAAS)

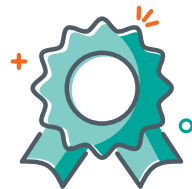
### The White Glove Approach to Migration

AvePoint Migration as a Service (MaaS) is a white glove approach that handles migration complexity so you don't have to. Industry-leading migration technologies and best practices are applied by the experts who know them best – ensuring your smooth transition to Office 365 or SharePoint from start to finish.



#### World-Class Expertise

AvePoint's team of Microsoft-certified engineers has moved various US government agencies to Office 365.



#### Award-Winning Tools

AvePoint's suite of industry-leading migration & data protection tools have been used to discover, classify, protect and move over 8 petabytes (PB) of data from more than a dozen source systems.



#### Proven Methodology

AvePoint's compliant migration methodology embodies best practices honed on the largest and most complex Office 365 migrations around the globe.

### AvePoint's Migration Experience

8 PB

Migrated

2,000+

Customers

500 TB

Largest Project

[www.pmddatasolutions.com](http://www.pmddatasolutions.com)

## What You Get

**AvePoint Migration as a Service (MaaS)** is a full consultation and implementation service. Our experts work with your scope and requirements to design and execute a thorough, phased migration plan.

 <b>Discovery</b> Perform a comprehensive review of your business needs as well as the current farms that make up your production environment.	<ul style="list-style-type: none"><li>• Source customization and data analysis</li><li>• Data pruning and classification</li><li>• Migration refactoring</li></ul>
 <b>Assessment</b> Identify and fill gaps in your governance or hardware requirements to build an outline for the execution phase.	<ul style="list-style-type: none"><li>• Data categorization</li><li>• Data filter and mapping</li><li>• Customization inventory and remediation</li></ul>
 <b>Pilot</b> Test an end-to-end migration in your production environment to identify areas where performance enhancements can be made.	<ul style="list-style-type: none"><li>• Throughput modeling</li><li>• Communication and reporting framework</li><li>• Migration schedule based on pilot speed characteristics.</li></ul>
 <b>Execution</b> Run full and incremental migrations from source to destination, and provide status reports to stakeholders and business users.	<ul style="list-style-type: none"><li>• Migration execution</li><li>• Compliance scanning and reporting</li><li>• User acceptance testing and data validation</li></ul>
 <b>Onboarding</b> Synchronize changes made in the source environment during execution, and transition users into the destination environment.	<ul style="list-style-type: none"><li>• Post-migration remediation and sequencing</li><li>• Freeze and synchronize source environment</li></ul>

## Our Success Stories

*"AvePoint acted as a trusted advisor throughout the entire process of our SharePoint migration.*

*-Bryon Catlin, Information Services Manager, Charlotte County Government*

- Moved 300+ GB to a hybrid SharePoint 2013
- Single solution for backup and management for hybrid environments
- Advanced solutions for automation and data protection

[www.pmdatasolutions.com](http://www.pmdatasolutions.com)