

# Reporting Server

Consolidated reporting for the entire journey

The Barracuda Reporting Server provides visibility across all network, security, and application delivery devices in order to protect your local and wide area network.

## Information Is Key

Staying secure requires up-to-date data for continuous assessment of the effectiveness of your security measures across all threat vectors. Normally, the vast amount of data resulting from different origins and with different formats needs to be processed manually, an approach that is both error prone and costly.

As a result, auditing and reporting requirements are commonly seen as an enormous yet inevitable burden because information retrieval and the processing of raw data are not automated and must therefore be done manually. Barracuda Reporting Server automates all of these challenges.

## Central Reporting Instance

Barracuda Reporting Server is the most flexible reporting solution that, fully automatically, gathers, consolidates, and analyzes data from any of Barracuda's CloudGen Firewalls, Web Application Firewalls, or Web Security Gateways deployed across your organizational network, including public cloud deployments. It enables businesses to provide policy-compliant access to information to all management levels within a secure and trusted environment.

## Advanced Report Definition, Automatic Report Generation, and Reliable Delivery

Reports are designed with an easy-to-use graphical user interface that lets you quickly select from hundreds of predefined reporting options.

By means of an automatic report generation feature, the Barracuda Reporting Server allows you to schedule, gather, consolidate, and analyze data produced by all of Barracuda's Network Security and Application Security solutions deployed in an organization's network.

Various output formats for paper or web-based publishing ensure that the most accurate and reliable information is available for your strategic business decisions. In addition, by deploying the Barracuda Backup, the default retention period of 12 months can be easily extended to fit specific requirements.

Finally, Barracuda Reporting Server lets you define per-report lists of recipients with various levels of granularity. Critical business information is therefore kept confidential, and reports are available when and where you need them.

**[www.pmddatasolutions.com](http://www.pmddatasolutions.com)**

## Technical Specs

### General Report Types

- Summary Reports
- Administrative Reports
- Productivity
- Web Activity
- Safety & Liability
- Network Activity
- Infection Activity
- Traffic Reports
- Advanced Reports

### Report Output Formats

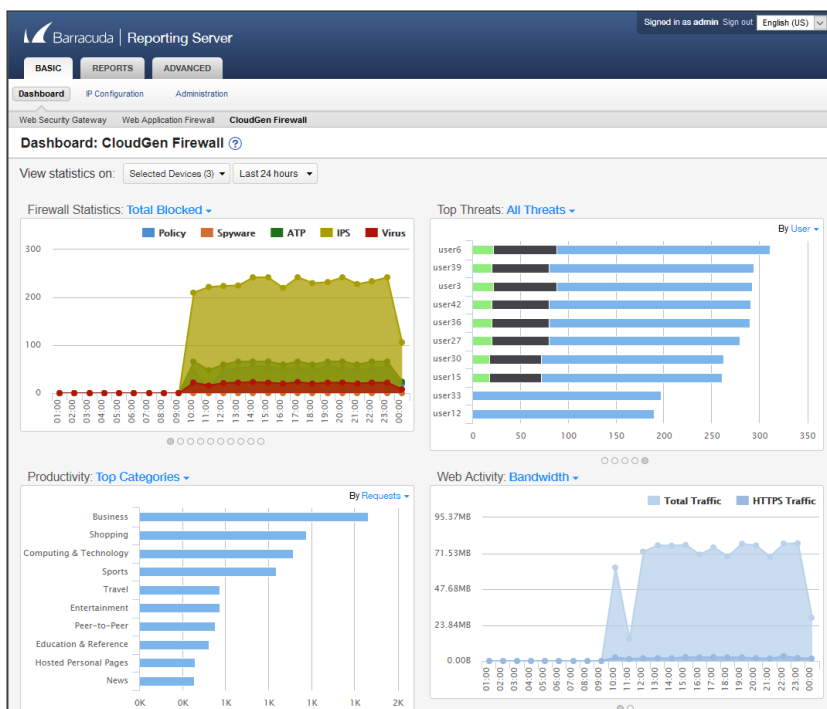
- PDF
- HTML
- CSV
- Text

### Barracuda Web Application Firewall specifics

- Report on attack type
  - All
  - Session Tamper Attacks
  - Protocol Violations
  - Forceful Browsing
  - Injection Attacks
  - XSS Injections
  - XML Violations
  - SQL Attacks
  - FILE Attacks
  - Auth Attacks
  - DDoS Attacks
  - Limits Violation
  - Outbound Attacks
  - JSON Violations

### Barracuda CloudGen Firewall specifics

- CloudGen Firewall Dashboard
  - Overview of allowed and blocked sessions along with an explanation.
  - Threats overview by user, source, and destination.
  - Web activity and productivity: Categories, users, and domains accessed by number of requests, bandwidth, and browse time.
- Summary Reports:
  - Safety and liability
  - Network activity
  - Threat summary
  - Web traffic summary
  - Total usage
- Safety & Liability Reports (based on user and requests):
  - Traffic to adult-rated sites
  - Anonymizer sites
  - Filesharing & P2P
  - Intolerance and hate
  - Spyware
  - Violence and terrorism
  - Based on user and requests.
- Security Reports by subtype (based on user, time, source IP, and destination)
  - ATP
  - IPS
  - Virus
  - Malware
  - Spyware
  - Blocked file content
- Web Activity Reports for
  - Accessed categories
  - Browse time
  - Domains
  - Users
  - Policy actions
  - User agents based on time of day, sessions, bandwidth requests, source, and user.



### Availability:

Barracuda Reporting Server is available as a virtual image for VMWare, VirtualBox, XenServer, and Hyper-V with the following suggested minimum specifications<sup>[1]</sup>:

- SSD data storage: 750 GB or larger
- Minimum required IOPS: 24,000
- Minimum RAM: 32 GB
- Minimum CPU cores: 12

Barracuda Reporting Server is available as an unlimited license<sup>[2]</sup> with mandatory annual subscription:

	EMEA / INTERNATIONAL	NORTH AMERICA
Barracuda Reporting Server Vx Virtual 600 base license	BRSIVM600a	BRSVM600a
Barracuda Reporting Server Vx 1-Year License	BRSIVM600a-v1	BRSVM600a-v1
Barracuda Reporting Server Vx 3-Year License	BRSIVM600a-v3	BRSVM600a-v3
Barracuda Reporting Server Vx 5-Year License	BRSIVM600a-v5	BRSVM600a-v5

<sup>[1]</sup> For details, please see <https://campus.barracuda.com/doc/78807632/>.

<sup>[2]</sup> Unlimited logs, supported CPU cores, supported boxes, and reporting.

**www.pmdatasolutions.com**

